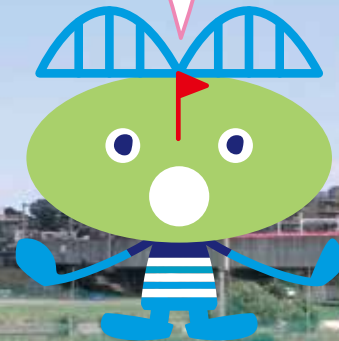


MARUKOBASHI GOLF

Driving Range & other practice facilities

Welcome!



MARU-GO-MARU
©MARUKOBASHI GOLF

Easy access from central Tokyo;
just one step out across the Maruko Bridge
where you can feel the breeze from Tama River.



◆ for all aspects of your game !

- driving range...250 yds / 57 bays
- approach green...37 bays
with bunker...3 bays
- putting green



Vivid green of
the natural
lawn!



students ^{points}

seniors

early morning

ladies

We offer some
special discounts.

see details on the other side !

Mondays

- parking
- dressing booth (9:00 ~15:30)

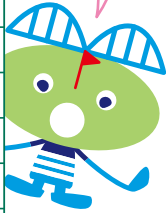


◆ Opening Hours

(open all year round except Jan.1)

month	hours
FEB.	7:00 ~ 16:30
MAR.	7:00 ~ 17:00
APR.~AUG.	7:00 ~ 17:30
SEP.	7:00 ~ 17:00
OCT.	7:00 ~ 16:30
NOV.~JAN.	7:00 ~ 16:00

It changes with the season.



* Last admission is 30minutes before the closing time.

* Due to the weather conditions, there are cases we should suspend our services. In case of the daylong rain, we would be closed all day. Please call us to confirm the actual conditions .

Monday!



Free additional balls on Mondays!

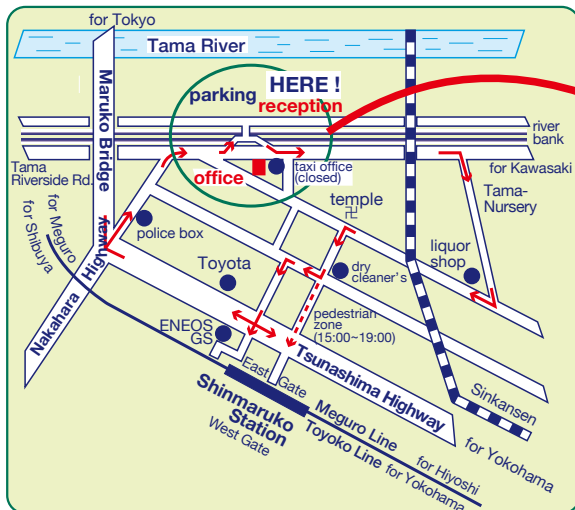
On every Monday (holidays excluded), you can hit "a little bit more" for free.

- for the customer who ordered 60 balls at the beginning, we provide additional 30 balls for free.
- for the customer who ordered 120 balls at the beginning, we provide additional 60 balls for free.

* except the hours of "all you can hit" service.

* available until 1 hour before the closing time.

◆ Access Information



- **by trains:** Get off at Shinmaruko Station (Tokyu Toyoko Line or Tokyu Meguro Line)+10 minutes walk.

- **by vehicles** (from Tokyo):

Go on Nakahara Highway to cross the Maruko bridge, turn left at the first traffic light. Turn right at the end of the road and get into the river bank at the first traffic light.

Beware of the one-way traffic on the way back.

◆ Rates (8%tax included)

- **entrance fee** ¥ 550 /1person

Earn points and get rewards!



types	balls	weekdays	sat. sun. holidays
standard	120	¥ 1,980	¥ 2,200
	60	¥ 990	¥ 1,100
students (age 10 and over)	120	¥ 1,540	¥ 1,760
	60	¥ 770	¥ 880
students association	120	¥ 1,320	¥ 1,540
	60	¥ 660	¥ 770
age 70 and over	120	¥ 1,540	
	60	¥ 770	

approach green with bunker	¥ 800 / 60minutes
putting green	¥ 530 / 60minutes
rental clubs	¥ 220 / club
rental shoes (23cm~28cm)	¥ 220 / pair

weekday morning (7:00~9:30) "all you can hit"	¥ 2,420 (entrance fee included)
every Thursday (holidays excluded) "for Ladies"	¥ 2,750 (entrance fee included)

private lesson: 20minutes	¥ 2,200 (entrance fee & balls excluded)
school: 90min×10times	¥ 24,200 (entrance fee & balls included)

◆ Instructors

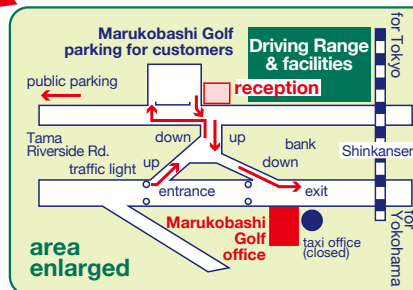
Lesson Days

M. Ishikawa (LPGAJ) Wed. Thu. Sat.

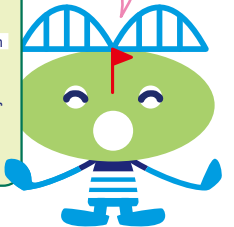
T.Furukawa (PGAJ) Tue. Fri. Sat. Sun. & Mon. (holidays only)

* PGAJ : a member of "The Professional Golfers' Association of Japan"

* LPGAJ : a member of "The Ladies Professional Golfers' Association of Japan"



Please check our website for the latest info!



MARUKOBASHI GOLF

562 Kamimaruko-Hachimancho, Nakahara-Ku
Kawasaki City, Kanagawa

<http://www.marukobashi.com>

tel: 044-411-4005